

# National Geographic TOPO!® maps now work on your Magellan® Triton™!

**Congratulations on purchasing your Triton.** Magellan and National Geographic have teamed up to bring you the best of both worlds. . . the most innovative and easiest-to-use GPS, and the best, most detailed topographic maps available.

Magellan Triton is the first device to offer full, onscreen compatibility, usage and display of National Geographic's maps. National Geographic compatible products with the Magellan Triton include 28 titles of TOPO! (covering all 50 states) and 21 titles of Weekend Explorer 3D (regional coverage). Both products include five layers of maps – from National Geographic Atlas maps to the most detailed U.S. Geological Survey (USGS) topographic maps. Export 2 levels of topographic maps, with waypoints and routes from TOPO! to your Magellan Triton. Import all your waypoints and routes collected on your trip into TOPO! to view on your PC.

This Install Disc includes the complete set of TOPO! features and functionality. Included in the disk is the TOPO! program, along with sample TOPO! maps for Yosemite National Park. If you are new to TOPO!, the sample maps show you the rich detail that comes with each TOPO! product. If you already own TOPO!, the software gives you an update to the latest version, and enables you to download TOPO! maps, waypoints, and routes to your Triton GPS.

**TOPO! is available at your favorite outdoor retailer, or for more information, go to [www.Topo-Triton.com](http://www.Topo-Triton.com).**



## Getting Started

Install the VantagePoint software that came with your Triton. This is necessary to ensure the connectivity from your PC to your Triton will work properly.

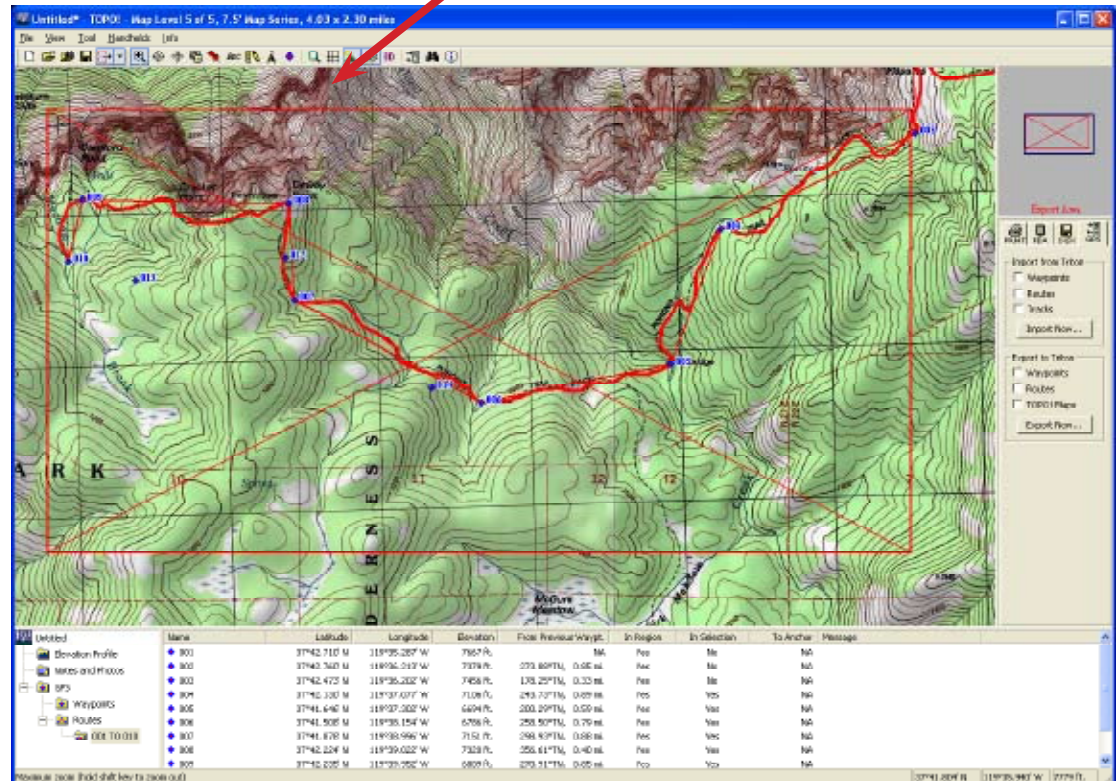
Then, install TOPO! from the disc that came with your Triton. You will automatically be directed to upgrade to TOPO! version 4.4.1. Install this upgrade before trying to connect your Triton with TOPO!. The upgrade can also be found at [www.topo-triton.com](http://www.topo-triton.com). If you already own TOPO!, install the upgrade to start exporting maps.

With the version 4.4.1 upgrade, your default GPS will be set to the Magellan Triton.

### Quick Map Export

1. Connect your Triton to your PC via the USB cable and turn it on.
2. Zoom into the area you wish to export
3. Click on the Handhelds button in the top toolbar (3rd button from the right that is a GPS with 2 arrows)
4. A red bounding box with an "X" through it will appear. This is the area that will export to the Triton. Move the bounding box to ensure it covers the area you want to export.
5. In the menu on the right under "Export to Triton", click on "Map Named:" and give your map a name.
6. Click "Export Now" and your map will transfer to your Triton.

Red bounding box. This will be the area that you export to your Triton



Read on to get more details on how to plan your trip and export waypoints and routes with your maps to your Triton.

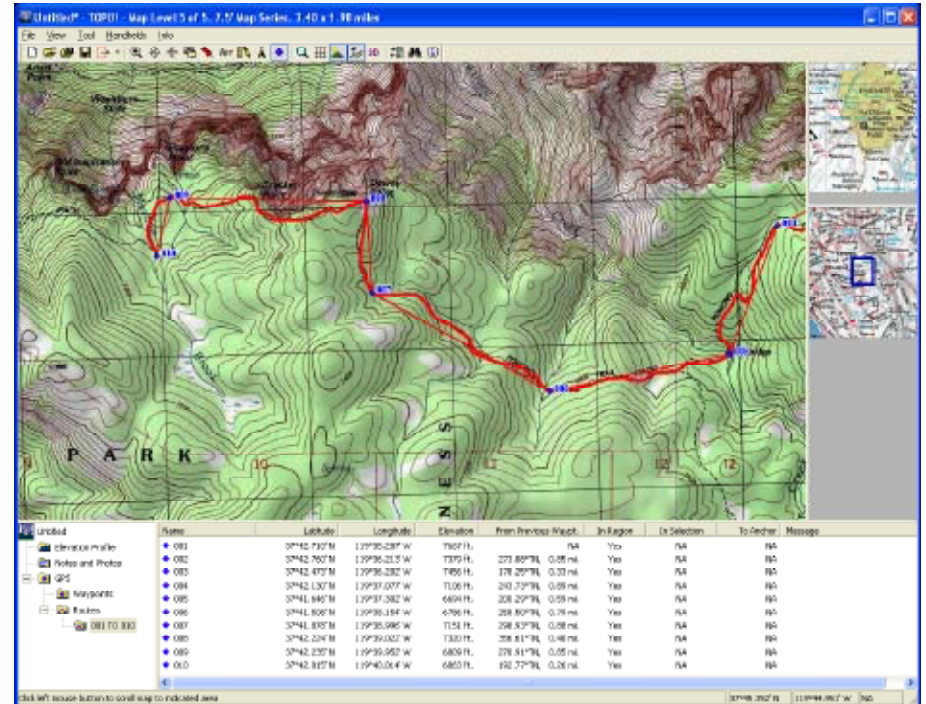


## Plan your trip

If you don't already own TOPO!, install TOPO! per the above instructions and use the sample data for Yosemite National Park that came with the software. If you are already a TOPO! user, this example works for any area in your state.

To get started, let's make a map. Zoom into Yosemite National Park in California, and you'll see a shaded area that includes sample TOPO! data for the park. TOPO! has five levels of maps:

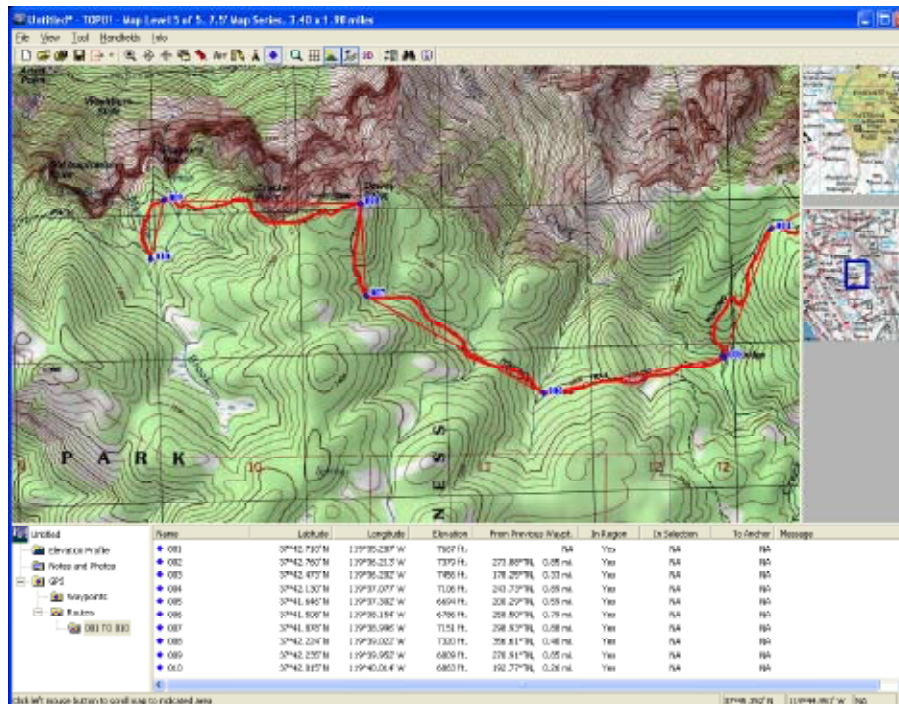
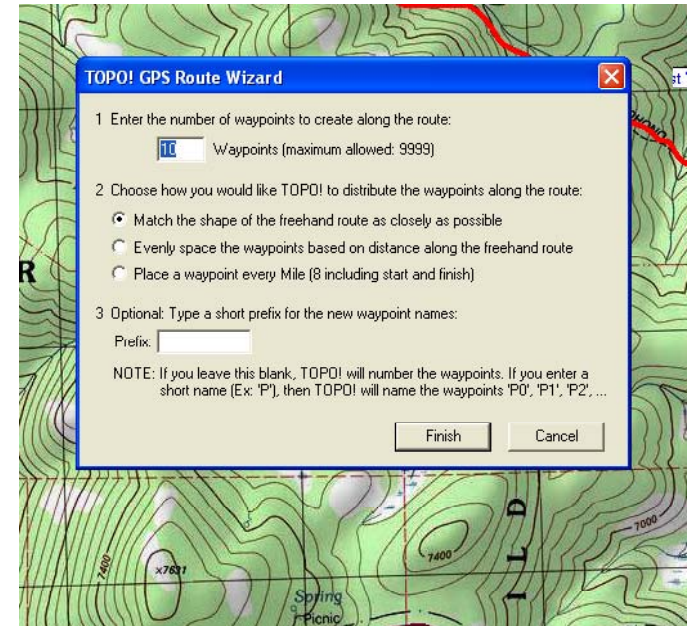
- Two National Geographic Atlas levels,
- a 1:500,000-scale USGS (United States Geological Survey) map set,
- a set of 1:100,000 USGS topographic maps,
- and at the highest detail, a set of 1:24,000-scale USGS topographic maps.



Zoom into the 1:24,000 level map, and use the Route Tool (selected from the Tool menu or click on the pencil icon from the toolbar) to draw a trail. Left click once to start drawing your trail, then left-click with your mouse to end your trail. Now a menu will pop up that gives you several options.

You can take a 3D Fly-Over, Build a Profile of the trail, Add a Label to your trail, create a GPS Route, or if you wanted you can Split the Trail in 2, or Delete it. If you accidentally lose this pop-up screen, just move your mouse over the trail, and when the pointing finger appears, right-click. This will bring the "TOPO! Route" pop-up screen back.

For now, let's build a GPS Route. Click on the GPS Route button. This will bring up a new menu for you to define how you want your GPS points to be generated. You can add up to 9,999 waypoints, but for now, let's use the default of 10 points, so when you're ready, click on the "Finish" button.



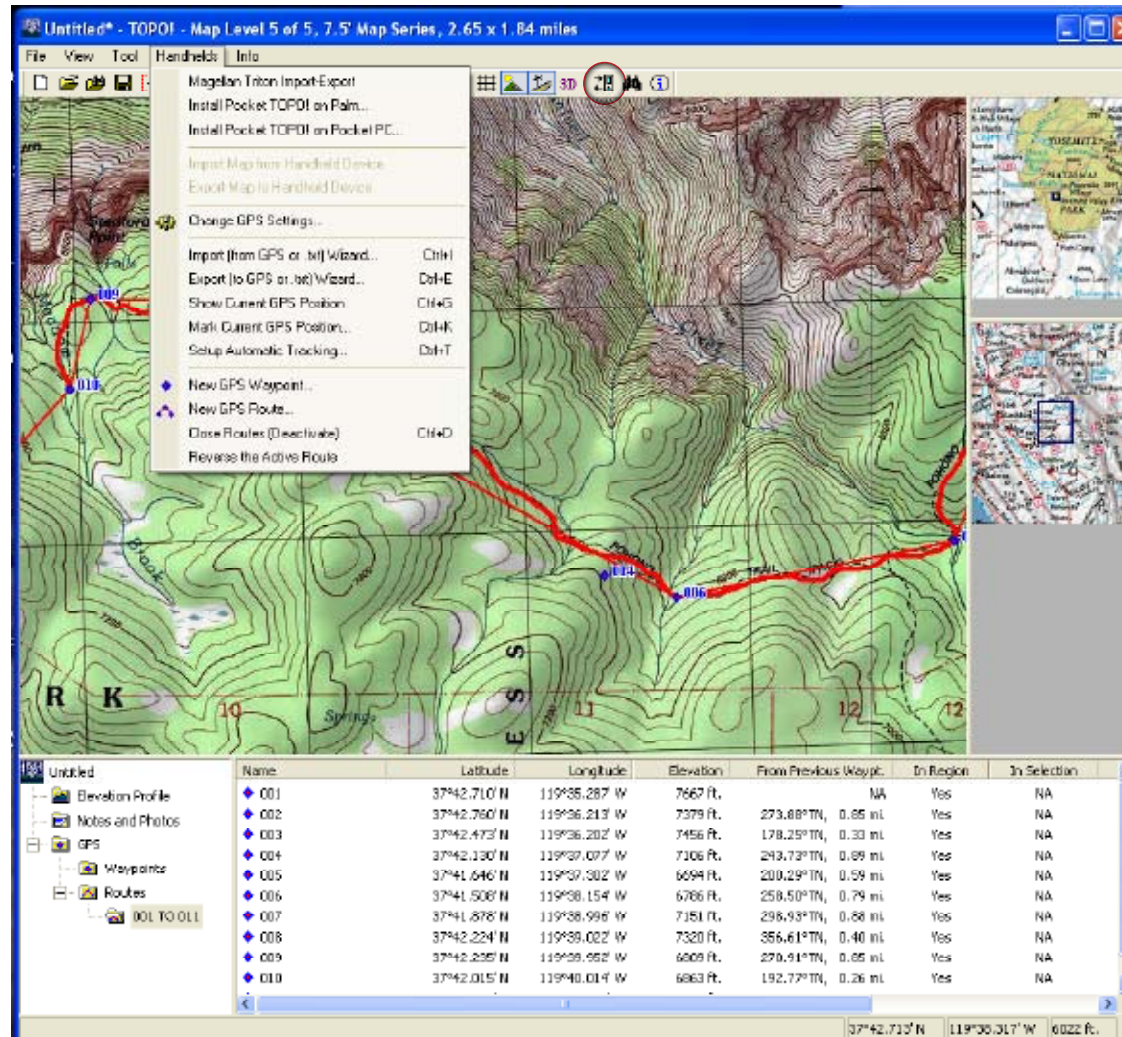
TOPO! will now automatically generate the waypoints for you, and a screen like this one will appear that shows the list of waypoints, along with their latitude, longitude, elevation, and their distance from the previous waypoint.

Now we're ready to export the map with the route and waypoints to your Triton.



## Export your custom map to your Triton

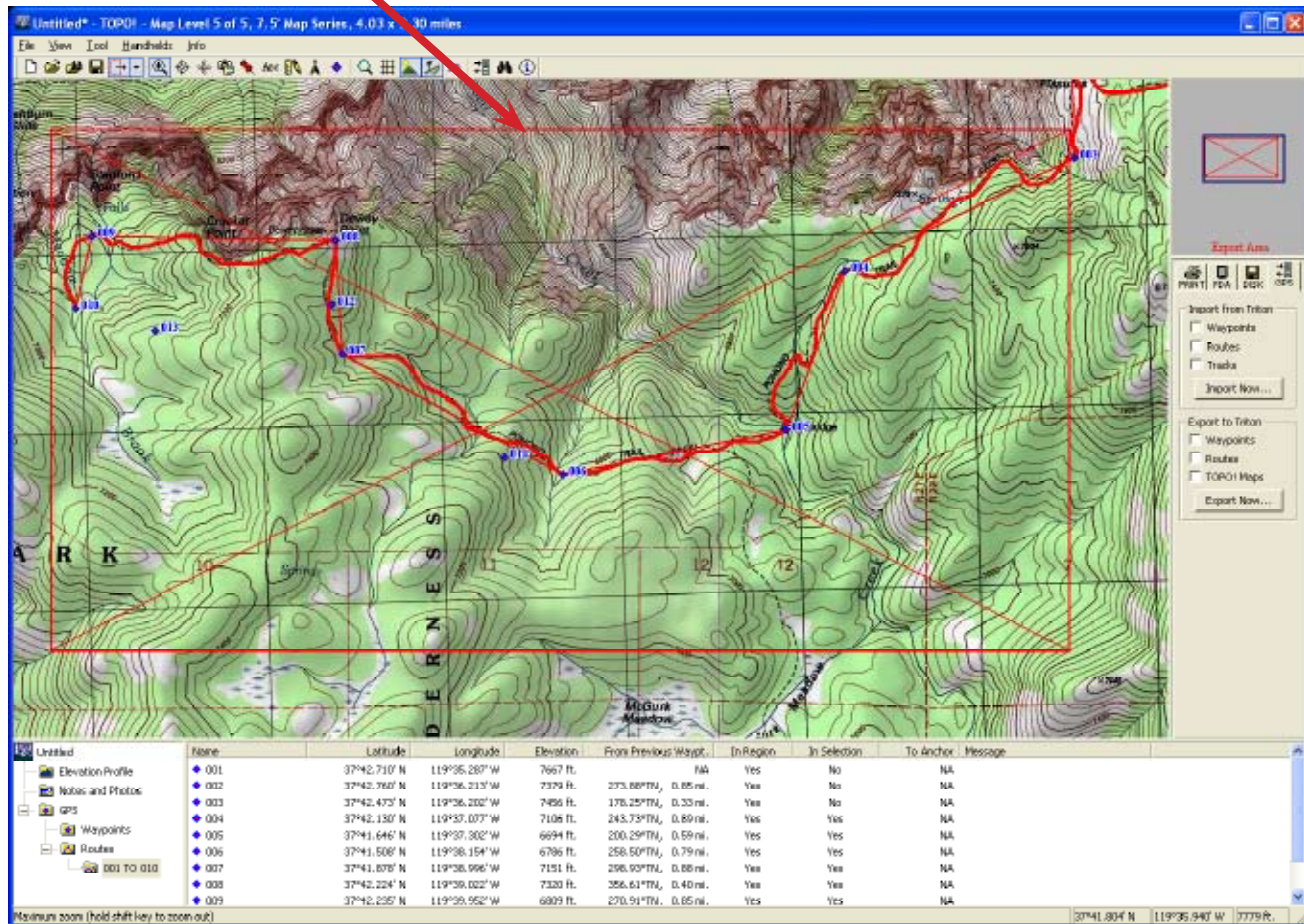
To export your new map to your Triton, go to the Handhelds menu item and click on the first item in the menu “Magellan Triton Import-Export”, or you can just click “Handhelds” button in the top toolbar (3rd button from the right that is a GPS with 2 arrows).



A new menu will now appear on the right side of the screen showing your options for importing and exporting to the Triton. Notice the red rectangle which has an "X" that goes from corner to corner. This box is the bounding box of the area that you will export to your Triton. You can easily change the shape and size of the box to fit whatever size you want. It is especially handy to have the box surround the trail that you've drawn. You are only limited in the amount of memory on your Triton. Your handheld has a limited amount of memory built-in. We recommend you use a SD card to maximize the amount of map you can transfer to the Triton.

Note: If you are in Level 5 (1:24,000), you will export both Level 4 and Level 5 maps. But if you are in Level 4 when you export, you will only export Level 4 maps.

Red bounding box. This will be the area that you export to your Triton



To Export your TOPO! map, your route, and your waypoints to your Triton, check all three of the boxes. Give your map a name to distinguish it from any other maps that you may export to your Triton. Click on the "Export Now" button, and your map, route, and waypoints will automatically be exported to your Triton.

PRINT PDA DISK GPS

Import from Triton

Waypoints

Routes

Tracks

Import Now...

Export to Triton

Waypoints

Routes

Map Named:

Export Now...

PRINT PDA DISK GPS

Import from Triton

Waypoints

Routes

Tracks

Import Now...

Export to Triton

Waypoints

Routes

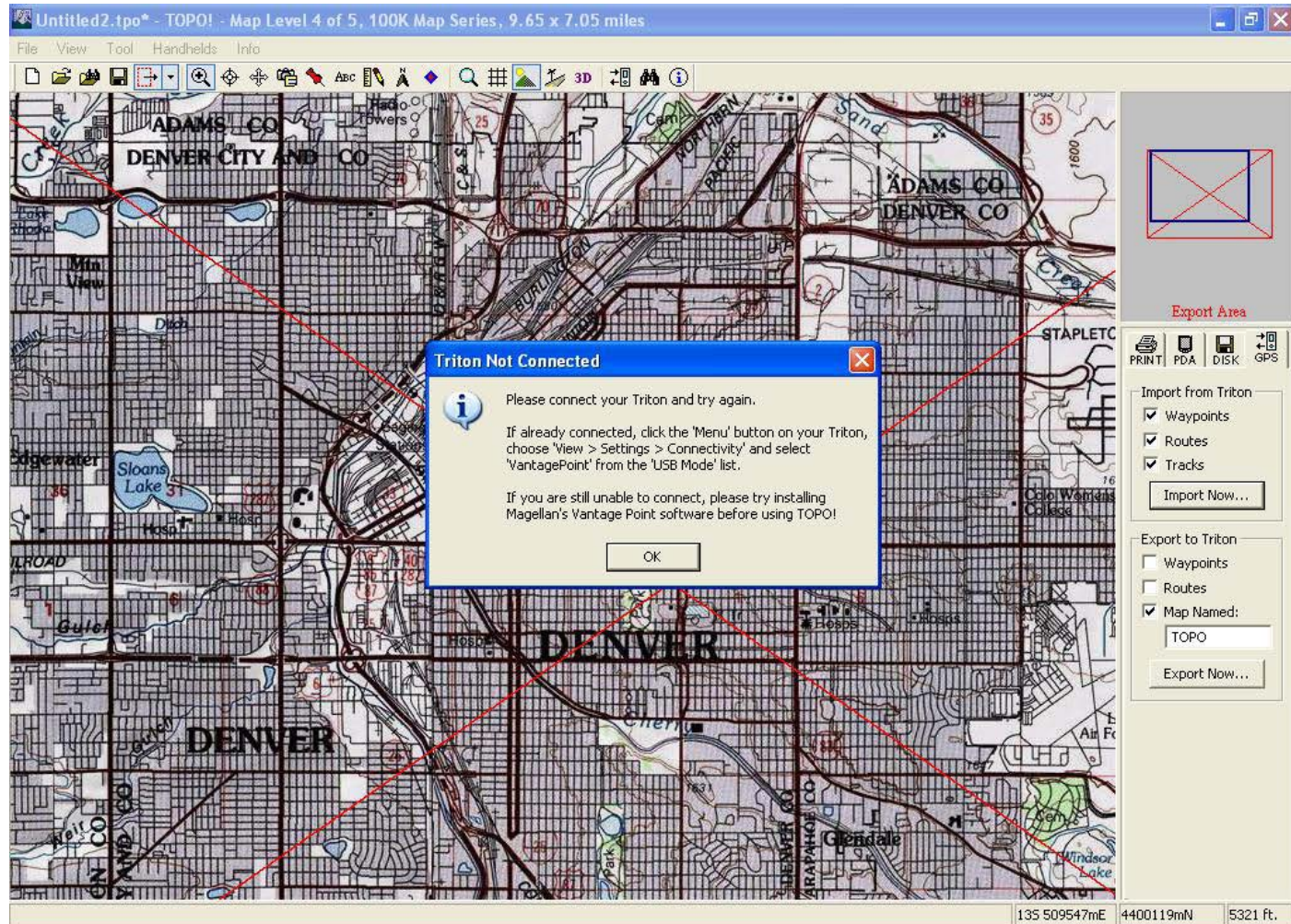
Map Named:

Half Dome

Export Now...



If you are having trouble connecting your PC to your Triton, check that the connectivity settings are correct. Go to: Menu > View > Settings > Connectivity and make sure it is set to VantagePoint.





## Import routes and waypoints your Triton to TOPO!

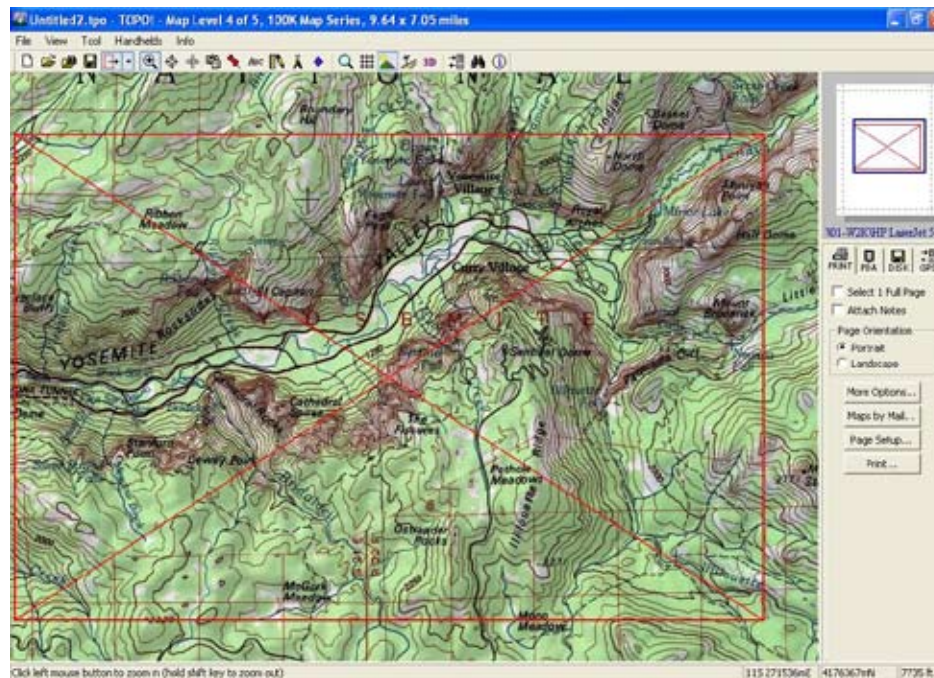
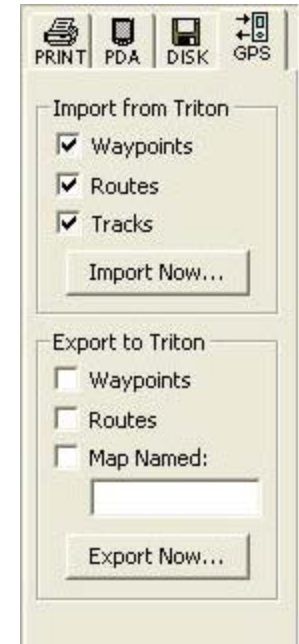
After you have collected waypoints, routes and tracks, you can transfer these to TOPO! to view on the map.

Open TOPO! and go to the Handhelds menu item and click on the first item in the menu “Magellan Triton Import-Export”, or you can just click “Handhelds” button in the top toolbar (3rd button from the right that is a GPS with 2 arrows).

The Magellan Triton import-export menu will now appear on the right side of the screen showing your options for importing and exporting to the Triton. Under “Import from the Triton”, check the appropriate boxes and click “Import Now”. Your waypoints, routes, and tracks will now be available in TOPO!. Note: You must own the maps in the area that you have imported from in order to view the waypoints, routes, and tracks on the map.

## Print your TOPO! maps

National Geographic recommends that you always carry a printed map with you on your trips. You can easily print high quality maps from TOPO! to ensure you have a back-up to your GPS.



Go to the File menu and click on “Print Map”. You will get a new menu on the right side of your screen where you have several options. Again, the red bounding box indicated the area to be printed. Ensure you have the area you want, click on the options you want, then click “Print”.

Both **TOPO!** state series and **Weekend Explorer 3D** are compatible with the **Magellan Triton** GPS units. You can purchase these software products at your local outdoor store or online at [www.ngstore.com](http://www.ngstore.com).

To learn more about **TOPO!** and **Weekend Explorer 3D**, visit [www.topo-triton.com](http://www.topo-triton.com).

To learn more about using **TOPO!**, please access the **User Guide** from the “**info**” menu in the application.

e  
x  
p  
l  
o  
r  
e